

TRAVEL GUIDE

LEVEL 1 GUIDELINES FOR OUR TRAVELLERS

SOUTH AFRICAN TRAVELLER COUNTRY RECOMMENDATION



South Africans eager to travel outside of the country for fun now have open borders, airlines to choose from, and destinations that will accept tourists from South Africa. That list of destinations has grown as SA's coronavirus caseload has declined, most importantly the number of new infections within the past seven days in terms of the population size, seeing more countries remove SA from no-travel red lists, or dropping onerous quarantine requirements that made holidays all but impossible. Some foreign destinations popular with South Africans are starting to generally relax their inbound travel rules, in an attempt to rekindle their tourism industries.

This information is correct as at 7 October 2020, as per the government regulations. Please refer to your XL Millennium Travel Consultant for any updated real-time information.

COUNTRIES OPEN TO RECEIVING SOUTH AFRICANS FOR LEISURE TRAVEL

Djibouti

Arriving visitors must submit to a Covid-19 test on arrival, and remain in the airport while the results are processed, which the US Embassy in that country says takes approximately four hours. If the test is negative, visitors are free to go. Those who test positive must return on the next flight, and if a high concentration of positive Covid-19 tests appear on a single arriving plane, all passengers may be denied entry.

There are several airlines now flying to and from the country, including Air Djibouti, Air France, Qatar Airways, Turkish Airlines, and Ethiopian Airlines, but most require a stopover which may complicate matters slightly depending on the route and that country's Covid layover policy.

Dubai

Dubai opened up to international tourists in early July. It's a city that serves South Africans primarily as a stopover to other international destinations, but many still choose to holiday there each year. From August 1, citizens of 29 specified countries required a Covid-19 PCR test on arrival, including South Africa. Although some destinations in the United Arab Emirates require a mandatory 14-day quarantine, according to the government of Dubai's department of health, quarantine is only necessary if you test positive on arrival.

Germany

Entry into Germany depends largely on where travellers are arriving from, and those arriving from certain countries are likely to have a harder time attaining a quarantine-free stay than others. The German government maintains a list of countries it considers high risk, in which South Africa features, but this does not mean a mandatory quarantine period is unavoidable. According to its rules, those entering Germany from a high-risk area "are subject to a mandatory Covid-19 test and may be subject to quarantine under the specific quarantine ordinances issued by the competent federal state". A negative test may, therefore, exempt South African travellers from Germany's self-isolation requirement, but some states may also apply their own requirements – including the submission of a second negative test before being exempt from quarantine.

Maldives

The island nation of the Maldives is heavily dependent on foreign tourism, and was quick to reopen to international tourists, including South Africans. According to the country's ministry of health, visitors must submit a health declaration form online prior to arrival, and all tourists must present a negative Covid-19 result taken within the last 72 hours upon arrival.

Switzerland

Switzerland was the first European country to add South Africa to its green list, meaning South African tourists need not quarantine there for 14 days. Be warned though, the country's Federal Office of Public Health regularly updates its green list, and any sudden spike in cases could render a quarantine-free trip there void.

Tanzania

Tanzania – a country which is deeply reliant on international tourism – has had an open border policy for some time, although this has come with varying conditions over the past few months. At present, the Tanzanian government has removed its mandatory 14-day quarantine requirements for most travellers, though some are still required to produce a negative Covid-19 test upon arrival. According to the US consulate in that country, "[t]ravellers from other countries with symptoms and signs related to Covid-19 infection will undergo enhanced screening and may be tested on arrival."

Turkey

Turkey is one of the more popular, affordable, and accessible destinations for South Africans to visit - and there are, during normal times at least, plenty of regular, direct flights between South Africa's main cities and Istanbul. Turkey has opened its borders to all travellers who meet the country's immigration rules, which for South Africans is typically a quick and easy online process.

According to Turkish Airlines, the country's national carrier that operates flights to and from South Africa, all passengers on board will undergo "a medical examination". Those who show symptoms will be tested for the coronavirus, and those who test positive, "will take medical treatment".

WHAT OUR TRAVELLERS COULD EXPECT

MASKS ARE MANDATORY

All travellers will be required to wear masks at all times. We recommend carrying spare masks as you will be expected to change these regularly

SCREENING

All travellers will be subjected to screening by Port Health Officials throughout their journey

NEGATIVE COVID/PCR TEST

Travellers may need to present a negative COVID-19 certificate (PCR) test. Results not older than 72 hours from time of departure from point of origin

IF YOU HAVE NOT TESTED...

Failure to produce a Covid-19 certificate may result in a traveller being denied boarding or being placed in mandatory quarantine at their own cost



Remember to carry a pen

HEALTH QUESTIONNAIRE

All travellers can expect to complete a Traveller Health Questionnaire prior to departure or upon arrival

QUARANTINE

All travellers detected with symptoms will possibly be required to remain in quarantine until a repeat COVID-19 test is conducted at their own cost

BOARDING COULD BE DENIED

Passengers WITHOUT a valid COVID-19 test result, may be denied boarding.

BUT... If the passport of the traveller from a high risk country indicates that he/she has spent 10 days or more in a low risk country before departure, he/she will be considered to be arriving from a low risk country.

APPLY FOR BUSINESS REASONS

Any person, from a country listed as having a high COVID -19 infection and transmission rate, who wishes to undertake business travel into the Republic as contemplated in regulation may, in writing, apply to the Minister of Home Affairs and demonstrate reasons for his or her request to enter the Republic for business purposes.

THE EXCEPTION

The exception will be business travellers with scarce and critical skills including diplomats, repatriated persons, investors and people participating in professional sporting and cultural events will undergo the same health protocol screenings.

WHAT OUR INBOUND/ FOREIGN NATIONALS TRAVELLERS COULD EXPECT

LONG TERM VISA HOLDERS

Long term visa holders who visit the country for business purposes may be allowed to travel to South Africa. These travellers will also be subject to health screenings for COVID-19 symptoms at the port of entry.



UPON ENTERING SOUTH AFRICA

What are the requirements to enter South Africa? (ASATA/DHA)

- 1** All arrivals must present a valid certificate of a negative COVID-19 PCR test, obtained not more than 72 hours (3 days) from the time of departure from the country of origin to South Africa. The test must be conducted by a certified medical practitioner and the certificate must have the name and signature of the practitioner who conducted the test.
- 2** Failure to present proof of a valid and negative test will require the traveller to quarantine at their own cost.
- 3** All arrivals will be screened for any COVID-19 symptoms and/or for contact with people who have been infected with the COVID-19 virus.
- 4** Should the traveller display any COVID-19-related symptoms or have been in contact with an infected person, they will be expected to take a mandatory COVID-19 test. This test will be at the traveller's cost. If the COVID-19 test comes back positive, the traveller will be subjected to a 10-day quarantine at a designated site, at the traveller's cost.
- 5** All arrivals must provide proof of accommodation address should they need to self-quarantine at the time of arrival in the country, subject to the accommodation allowing for self-quarantine.
- 6** All arrivals will be asked to download the COVID Alert South Africa mobile app. Information on the app can be found [here](#).
- 7** Foreign national arrivals from low- and medium-risk countries will be subject to the prevailing visa requirements. Our understanding of this is that the visa regime that was previously in place stands (e.g. if a 90-day waiver was in place before, it will be reinstated now if the traveller is coming from a low- or medium-risk country). Foreign national arrivals from high-risk countries may enter with an application in compliance with the exemptions laid out by government and then subject to the prevailing visa requirements.
- 8** All foreign national arrivals must have travel insurance that covers the cost of any testing or quarantine.



WHERE TO TEST:

These are the approved labs for COVID tests in South Africa

Ampath: www.ampath.co.za

Lancet: <http://www.lancet.co.za>

Lab24: <https://lab24.co.za/>

PathCare: <https://www.pathcare.co.za/events/locations>

Epicentre: <https://epicentre.org.za/>

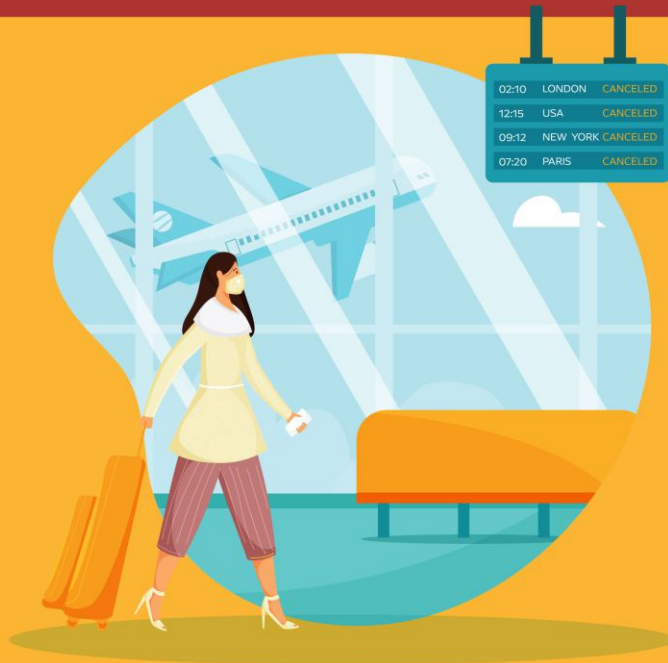
Testaro: <https://www.testaro.co.za/>

GHI Labs: <https://neubergglobal.com/>
To Register: screening.purehealth.ae/application



The test must be conducted by a certified medical practitioner and the certificate must have the name and signature of the practitioner who conducted the test.

TRAVEL RECOMMENDATIONS



Only travellers will be allowed into the airport. Loved ones/colleagues who are not travelling will not be allowed to accompany the traveller(s)

Practice social distancing.

Adjustments leading up to the security checkpoint include, increasing the distance between individuals as they enter the security checkpoint, placing visual reminders of appropriate spacing on checkpoint floors and staggering the use of lanes where feasible. No two airports are alike, so this could look a little different at each airport.

New procedures.

Routine cleaning and disinfecting of frequently touched surfaces in the screening checkpoint area. Plastic shielding has also been installed at many travel document checking podiums, bag search and drop off locations.

Separate food for X-ray screening.

You will likely need to place carry-on food items into a clear plastic bag and place that bag into a bin.

Put items in your own bag.

When removing belts, wallets, keys and phones, put them directly into your carry-on bag instead of into the bins to reduce touch-points during the screening process.

Use facial protection.

Security officers at checkpoints are now using facial protection and wearing gloves. You should too. Requirements will vary, but it can't hurt to be prepared.

Keep possession of boarding passes.

Instead of handing your boarding pass to security officers, expect to place your boarding pass (paper or electronic) on the boarding pass reader yourself.

Covid certificate/PCR.

We recommend you travel with a printed copy of your results instead of a digital copy only, as regulations may differ.

TRAVEL INSURANCE

XL Millennium Travel recommend that all travellers take out travel insurance. Each traveller's requirements and itinerary are unique and as such we suggest that you consult with your Travel Consultant with regards to securing the correct travel insurance policy. One should always ensure that you have the policy in writing and that you familiarise yourself with the inclusions and exclusions.

Working closely with our travel insurance partner, Holland Travel Insurance, you can be rest assured that we will be able to provide the best cover and advice for your travel needs.



CHECK THE REQUIREMENTS OF THE DESTINATION

Be sure to check the requirements of your travel destinations as some, like South Africa and Brazil, require that foreign national arrivals have travel insurance.



GET THE RIGHT COVER FOR INTENDED TRAVEL

Travel insurance policies will differ based on factors such as your age, the length of your trip, and what you want covered. An insurance policy may cover cancellation for events, trip interruptions, unexpected illness, natural disaster or unrest in the destination.

Holland.
travel

HEALTH QUESTIONNAIRES



Download traveller health questionnaire – screening within South Africa

Download traveller health questionnaire – exit screening from South Africa



TRAVEL • CONFERENCES • INCENTIVES

www.xlmillennium.co.za